

# POSTGRADUATE PROGRAMS

**13** STRICTO SENSU  
MASTER'S DEGREES

Biosciences

Neotropical Biodiversity (*Masters and PhD.*)

Economics

Education

Energy and sustainability (*Masters and PhD.*)

Civil Engineering

Applied Physics

History

Graduate Program in Contemporary Integration of Latin America (*Masters and PhD.*)

Interdisciplinary in Latin American Studies

Comparative Literature

Public Policy and Development

International Relations

## A UNIVERSITY FOR LATIN AMERICA AND THE CARIBBEAN

UNILA is a Brazilian higher education institution committed to training human resources capable of contributing to the integration of peoples, regional development and the cultural, scientific and educational exchange of Latin America and the Caribbean, especially within the Southern Common Market (MERCOSUR for its Spanish initials).

## INTERCULTURAL

It has an innovative intercultural organization, committed to the destiny of the Latin American and Caribbean societies, which is based on the exchange of experiences and integrated academic-scientific training by different cultures and peoples.

Foz do Iguaçu | Paraná | Brazil

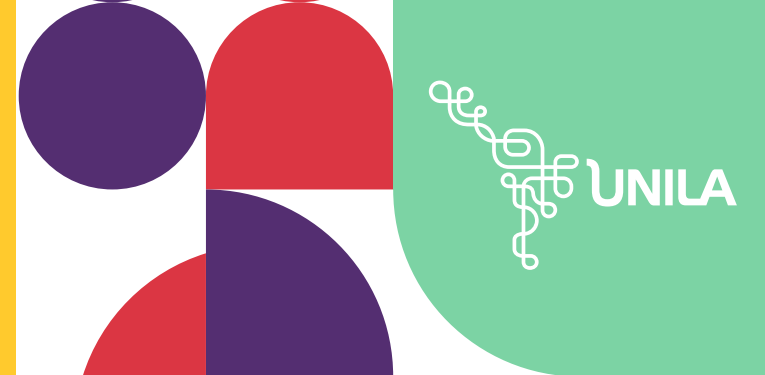
[PORTAL.UNILA.EDU.BR](http://PORTAL.UNILA.EDU.BR)

 @instaunila

 unila.oficial

 @unila

*Learn more about the University by accessing our science outreach portal*



**FEDERAL,  
INTERNATIONAL  
AND QUALITY  
UNIVERSITY**



# STUDY AT UNILA

UNILA conducts various selection processes to provide a bilingual education, full of opportunities and daily interaction with people from different countries.

Learn about the admission processes to study at UNILA by visiting [portal.unila.edu.br/ingresso](http://portal.unila.edu.br/ingresso).

## UNDERGRADUATE

### EVENING PROGRAMS

- Public Administration and Public Policy
- Natural Sciences - Biology, Physics and Chemistry
- Philosophy – *Licentiate Degree*
- Geography – *Licentiate Degree*
- History of Latin America
- History – *Licentiate Degree*
- Languages – Spanish and Portuguese as Foreign Languages
- Mathematics – *Licentiate Degree*
- Chemistry – *Licentiate Degree*
- Social Service

### MORNING PROGRAMS

- Cultural Mediation – Arts and Letters
- International Relations and Integration
- Collective Health

### AFTERNOON PROGRAMS

- Anthropology – Latin American Cultural Diversity
- Social and Political Science – Society, State, and Politics in Latin America
- Rural Development and Food Security
- Geography – *Bachelor's Degree*

### FULL-TIME PROGRAMS

- Architecture and Urbanism
- Biotechnology
- Biological Sciences - Ecology and Biodiversity
- Economic Sciences - Economics, Integration and Development
- Cinema and Audiovisual
- Civil Infrastructure Engineering
- Energy Engineering
- Materials Engineering
- Physical Engineering
- Chemical Engineering
- Medicine
- Music

# POSTGRADUATE PROGRAMS

## 9 LATO SENSU SPECIALIZATIONS

### ON-CAMPUS MODALITY

- Teaching History in Latin America
- Teaching and Learning Additional Languages
- Human Rights in Latin America
- Brazil-Paraguay Integration: Bilateral Relations, Development, and Borders
- Multiprofessional Residency Program in Family Health
- Contemporary Integration of Latin America
- Gender and Diversity in Education

### DISTANCE EDUCATION

- Health Management
- International Relations for Basic Education Teachers